



## Reported Road Accident Statistics

Standard Note: SN/SG/2198

Last updated: 12 March 2013

Author: Matthew Keep

Social and General Statistics Section

---

This Note provides a range of data relating to reported road accidents in Great Britain, including by: severity of accident; road type; road user type; time of accident; and, age. Breath-testing data is included as are international comparisons of road fatality statistics. It also discusses issues about the reliability of reported road casualty data in Great Britain.

In 2011, there were 203,950 reported casualties on the roads of Great Britain, including 1,901 fatalities and 23,122 serious casualties.

In Great Britain, since the early 1990s, the number and severity of reported accidents has reduced. Compared with 1990, in 2011: there were fewer people killed in road accidents (-64%); there were fewer people seriously injured (-62%); and, the slight casualty rate is lower (-45%). However, in 2011 there was an increase in the number of people killed (3%) and the number of people seriously injured (2%) in road accidents compared with 2010.

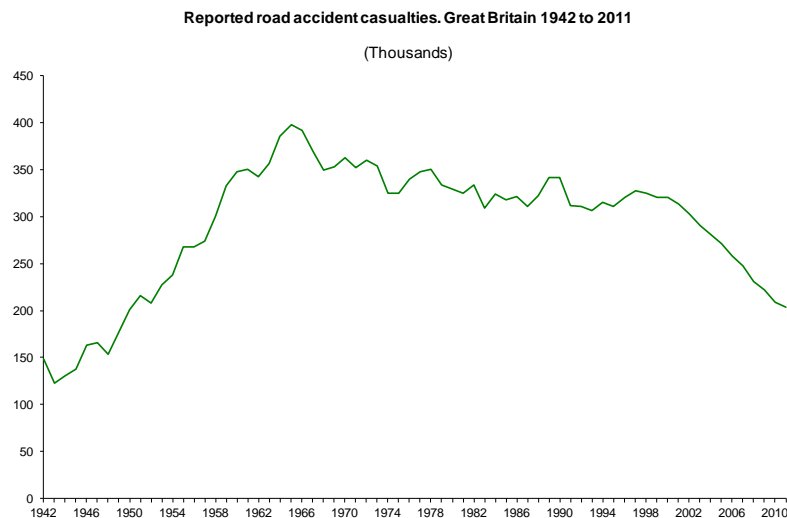
In 2011 there were relatively fewer road fatalities in the United Kingdom than in other countries across Europe and the rest of the World.

### Contents

A.	Reported road casualties by severity	2
B.	Reported road casualties by road type and severity	6
C.	Reported road casualties by road user type and severity	8
D.	Reported road casualties by time of accident and severity	11
E.	Reported road casualties by age and road user type	11
F.	Breath testing among drivers involved in accidents	13
G.	International comparisons of road deaths	14
H.	Further Information	16

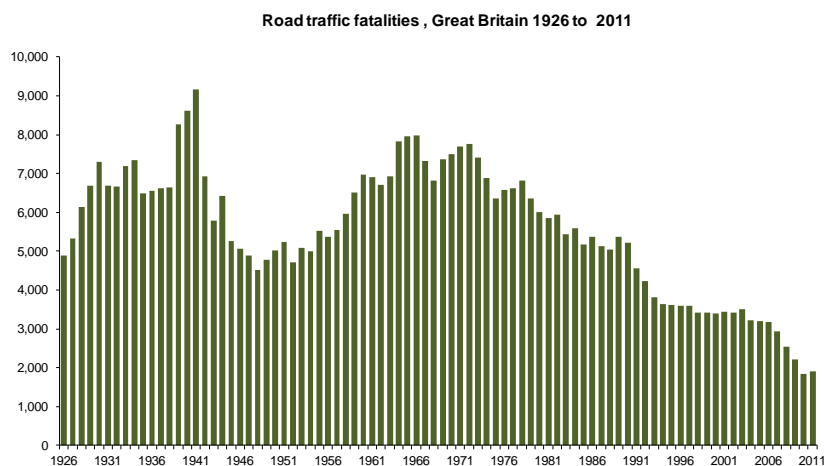
## A. Reported road casualties by severity

Table 1 (see page 4) displays road casualty data from 1926 to present. Between 1942 and 1965 as the amount of traffic increased on Britain's roads so did the total number of casualties. In 1942 there were 148,000 casualties (including fatalities) on our roads, with casualties reaching a peak of 398,000 in 1965. Between 1965 and 1999 there was an overall gradual trend toward a declining number of casualties, albeit with some fluctuation. From 1999 there have been consecutive annual decreases in the number of casualties. In 2011 there were 204,000 casualties on British roads, a similar level to that observed in 1950.



The risk of being involved in an accident and being hurt or killed whilst travelling on the roads has diminished over time. In 1938, there were 314 casualties for every 100 million kilometres travelled while in 2011 there were 41 casualties per 100 million kilometres travelled.

In pre-war and wartime Britain, travelling on the roads carried a greater risk of being killed. For example, between 1939 and 1941 the number of fatalities averaged around 8,700 per year, over three times the annual number killed today. Since the 1970s the number of road deaths has fallen considerably, from over 7,700 deaths in 1972, to 1,901 in 2011. However, there was a 3% increase in the number of road deaths in 2011, compared to 2010.



The number of non-fatal casualties increased sharply after the Second World War. In 1945, there were 133,000 such casualties, rising to 390,000 by 1965. From the mid-1960s to 2002, the number of non-fatal casualties fell slightly, although continued to be around 300,000 per year. However, in 2003 non-fatal casualties dropped below 300,000 for the first time since 1957 and have continued to fall. In 2011 there were 202,000 non-fatal casualties.

The number of non-fatal casualties as a proportion of total vehicle kilometres travelled has fallen from 229 serious or slight casualties per 100 million kilometres travelled (1965) to 41 per 100 million (2011). This suggests that travelling on Britain's roads today carries a significantly reduced risk of being involved in an accident that results in serious or slight injury.

### **Reliability of the Road Casualties in Great Britain data**

The Department for Transport (DfT) road casualty statistics are drawn from information collected by police forces in Great Britain and cover all accidents involving a road vehicle (including pedal cycles) that result in a personal injury. The data is recorded in the STATS19 database. The figures are widely recognised as being an incomplete count of both accidents and casualties, although figures on fatalities are generally acknowledged to be robust.

DfT and others have undertaken research into the extent and nature of this under-recording of non-fatal injuries, but it has not yet been conclusive in terms of the scale of under-recording. Chapters 5 and 6 of [Road Accidents in Great Britain 2008](#)<sup>1</sup> provide a useful summary of the research.

Some of the most detailed work has involved comparing STATS19 data with [NHS Hospital Episode Statistics](#).<sup>2</sup> This and other studies imply that it is insufficient to rely solely on STATS19 data, or on any single data source for an assessment of trends in serious injuries. Different databases tend to reveal different parts of the picture and researchers tend to recommend that a system of data triangulation would improve understanding of trends in road casualties.

In July 2009, the UK Statistics Authority published their [assessment of road casualty statistics](#)<sup>3</sup> which concluded that the under-reporting of road accident casualties is a significant and intractable problem. Consequently the Authority concluded that the published statistics may not be sufficiently reliable to meet all user needs and that DfT need to explain and contextualise the limitations of the statistics more fully at the time of publication.

---

<sup>1</sup>[http://webarchive.nationalarchives.gov.uk/20110503151558/http://www.dft.gov.uk/adobepdf/162469/221412/221549/227755/rrc\\_gb2008.pdf](http://webarchive.nationalarchives.gov.uk/20110503151558/http://www.dft.gov.uk/adobepdf/162469/221412/221549/227755/rrc_gb2008.pdf)

<sup>2</sup><http://web.archive.org/web/20101122111101/http://dft.gov.uk/pgr/roadsafety/research/rsrr/theme5/underreportingofroadcasual.pdf>

<sup>3</sup><http://www.statisticsauthority.gov.uk/assessment/assessment/assessment-reports/assessment-report-4---road-casualty-statistics--27-july-2009.pdf>

**Table 1: Road traffic injury accidents and casualties, 1926 to 2011***Great Britain*

	Deaths	Other casualties ('000s)			All casualties		Traffic (billion vehicle km)		
		Serious	Slight	Total	000s	Rate <sup>(a)</sup>	Motor	Pedal cycles	Total
1926	4,886	..	..	134	139	..	..	..	..
1927	5,329	..	..	149	154	..	..	..	..
1928	6,138	..	..	165	171	..	..	..	..
1929	6,696	..	..	171	178	..	..	..	..
1930	7,305	..	..	178	185	..	..	..	..
1931	6,691	..	..	202	209	..	..	..	..
1932	6,667	..	..	206	213	..	..	..	..
1933	7,202	..	..	216	224	..	..	..	..
1934	7,343	..	..	232	239	..	..	..	..
1935	6,502	..	..	222	228	..	..	..	..
1936	6,561	..	..	228	234	..	..	..	..
1937	6,633	52	174	226	233	..	..	..	..
1938	6,648	51	176	227	233	314	46.7	27.5	74.2
1939	8,272	..	..	..	..	..	..	..	...
1940	8,609	..	..	..	..	..	..	..	...
1941	9,169	..	..	..	..	..	..	..	...
1942	6,926	36	105	141	148	..	..	..	...
1943	5,796	31	86	117	123	..	..	..	...
1944	6,416	33	91	124	131	..	..	..	...
1945	5,256	33	101	133	138	..	..	..	...
1946	5,062	37	121	157	163	..	..	..	...
1947	4,881	36	126	161	166	..	..	..	...
1948	4,513	33	116	149	153	..	..	..	...
1949	4,773	43	129	172	177	252	46.5	23.6	70.1
1950	5,012	49	148	196	201	275	53.1	19.9	73.0
1951	5,250	52	159	211	216	271	58.9	20.8	79.7
1952	4,706	50	153	203	208	249	60.8	22.9	83.7
1953	5,090	57	165	222	227	265	64.9	20.8	85.7
1954	5,010	57	176	233	238	269	69.7	18.8	88.5
1955	5,526	62	200	262	268	282	77.0	18.2	95.2
1956	5,367	61	201	263	268	276	80.8	16.2	97.0
1957	5,550	64	205	268	274	284	80.3	16.1	96.4
1958	5,970	69	225	294	300	280	93.0	14.1	107.1
1959	6,520	81	246	327	333	283	104.2	13.6	117.8
1960	6,970	84	256	341	348	280	112.3	12.0	124.3
1961	6,908	85	258	343	350	263	122.4	10.9	133.3
1962	6,709	84	251	335	342	249	128.3	9.3	137.6
1963	6,922	88	261	349	356	246	136.3	8.2	144.5
1964	7,820	95	282	378	385	240	152.3	8.0	160.3
1965	7,952	98	292	390	398	235	162.7	7.0	169.7
1966	7,985	100	285	384	392	219	172.9	6.3	179.2
1967	7,319	94	269	363	370	199	180.0	5.6	185.6
1968	6,810	89	254	342	349	181	187.7	5.0	192.7
1969	7,365	91	255	346	353	179	192.5	4.6	197.1
1970	7,499	93	262	356	363	177	200.5	4.4	204.9
1971	7,699	91	253	344	352	163	212.0	4.3	216.3
1972	7,763	91	261	352	360	159	222.5	3.9	226.4
1973	7,406	89	257	346	354	149	234.0	3.7	237.7
1974	6,883	82	236	318	325	139	229.7	3.8	233.5
1975	6,366	77	241	319	325	138	231.7	4.4	236.1

**Table 1 ctd: Road traffic injury accidents and casualties, 1926 to 2011**

Great Britain

	Deaths	Other casualties ('000s)			All casualties		Traffic (billion vehicle km)		
		Serious	Slight	Total	000s	Rate <sup>(a)</sup>	Motor	Pedal cycles	Total
1976	6,570	80	254	333	340	137	243.5	5.0	248.5
1977	6,614	82	260	341	348	138	246.8	6.1	252.9
1978	6,831	83	260	343	350	134	256.5	5.1	261.6
1979	6,352	80	248	328	334	128	255.9	4.6	260.5
1980	6,010	79	243	323	329	119	271.9	5.1	277.0
1981	5,846	78	241	319	325	115	276.9	5.4	282.3
1982	5,934	80	249	328	334	115	284.5	6.4	290.9
1983	5,445	71	233	303	309	105	288.1	6.4	294.5
1984	5,599	73	246	319	324	105	303.1	6.4	309.5
1985	5,165	71	241	312	318	101	309.7	6.1	315.8
1986	5,382	69	247	316	321	97	325.3	5.5	330.8
1987	5,125	64	242	306	311	87	350.5	5.7	356.2
1988	5,052	63	254	317	322	85	375.7	5.2	380.9
1989	5,373	63	273	336	342	83	406.9	5.2	412.1
1990	5,217	60	275	336	341	82	410.8	5.3	416.1
1991	4,568	52	255	307	311	75	411.6	5.2	416.8
1992	4,229	49	257	307	311	75	412.1	4.7	416.8
1993	3,814	45	257	302	306	74	412.3	4.0	416.3
1994	3,650	47	265	312	315	74	421.5	4.0	425.5
1995	3,621	46	262	307	311	72	429.7	4.1	433.8
1996	3,598	44	272	317	321	72	441.1	4.1	445.2
1997	3,599	43	281	324	328	72	450.3	4.1	454.4
1998	3,421	41	281	322	325	70	458.5	4.0	462.5
1999	3,423	39	278	317	320	68	467.0	4.1	471.1
2000	3,409	38	279	317	320	68	466.2	4.1	470.3
2001	3,450	37	273	310	313	66	472.6	4.2	476.8
2002	3,431	36	263	299	303	62	483.7	4.4	488.1
2003	3,508	34	253	287	291	59	486.7	4.4	491.1
2004	3,221	31	246	278	281	56	493.9	4.1	498.0
2005	3,201	29	239	268	271	54	493.9	4.3	498.2
2006	3,172	29	227	255	258	51	501.1	4.5	505.6
2007	2,946	28	217	245	248	49	505.4	4.1	509.5
2008	2,538	26	202	228	231	46	500.6	4.6	505.2
2009	2,222	25	195	220	222	44	495.8	4.8	500.6
2010	1,850	23	184	207	209	42	487.9	4.8	492.7
2011	1,901	23	179	202	204	41	488.9	4.9	493.8

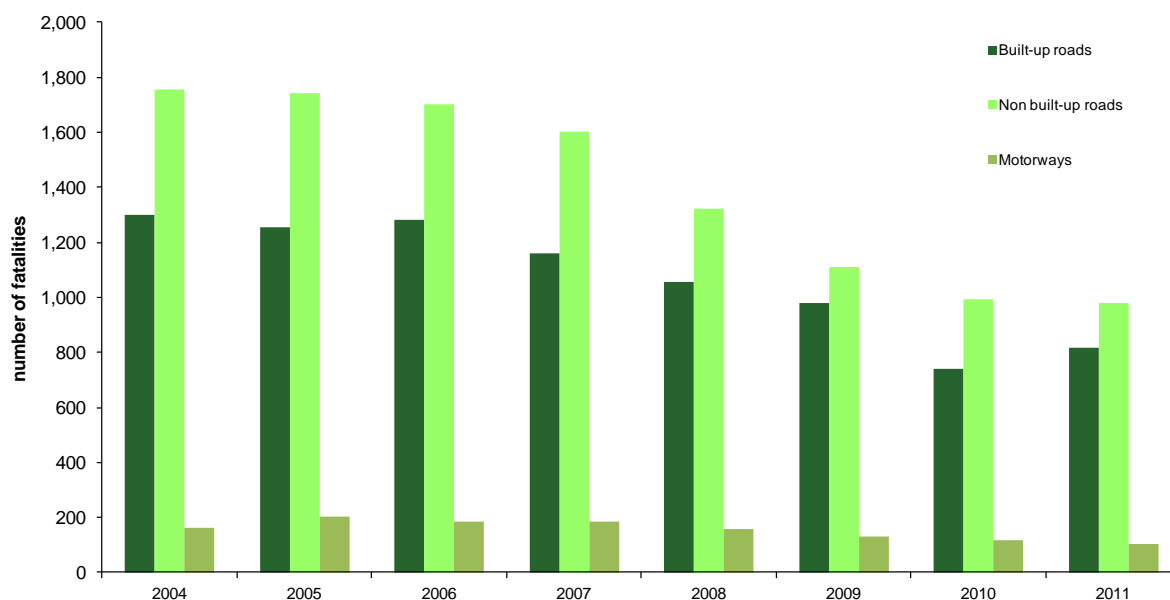
a) Per 100 million vehicle kilometres.

Source: Department for Transport. Reported Road Casualties Great Britain: 2011

## B. Reported road casualties by road type and severity

1,901 people were killed on Britain's roads in 2011, close to three-fifths were killed on non built-up roads (roads with speed limits of 40mph or more). 6% of fatalities occurred on motorways.

Fatalities by road class, Great Britain 2004 to 2011



The risk of fatality resulting from a road accident is greater on roads with higher speed limits. In 2011, 0.6% of casualties on built-up roads (typically speed limits of 30 or 40 mph) resulted in fatality compared with 2.0% of casualties on rural roads (up to 60 mph) and 1.1% on motorways (up to 70 mph).

Overall, most road casualties (i.e. fatal and non-fatal) tend to occur on built-up roads. In 2011, 71% of casualties occurred on built-up roads compared to 24% on non built-up roads and 5% on motorways (see Table 2).

**Table 2: Accidents by road class and severity: 1994-98 average,<sup>1</sup> 2004 - 2011**

Great Britain

Number of casualties

	1994-98 average	2004	2005	2006	2007	2008	2009	2010	2011
<b>Built-up roads<sup>2</sup></b>									
<b>A roads</b>									
Killed	748	604	580	619	550	492	474	369	420
KSI <sup>3</sup>	12,535	8,571	7,886	7,985	7,958	7,490	7,055	6,506	6,979
All severities	97,700	82,608	77,765	73,324	71,751	69,764	67,146	64,449	64,641
<b>B roads</b>									
Killed	211	200	183	182	192	157	168	107	116
KSI	3,769	2,789	2,480	2,527	2,519	2,403	2,300	2,040	2,239
All severities	27,679	24,743	23,673	22,715	22,066	21,144	20,547	19,314	19,178
<b>Other roads</b>									
Killed	541	497	492	480	418	408	339	263	280
KSI	12,584	8,962	8,700	8,705	8,434	7,987	7,435	6,908	7,027
All severities	94,984	82,967	82,139	78,624	74,969	70,051	68,067	63,560	61,711
<b>All built-up roads<sup>4</sup></b>									
Killed	1,501	1,301	1,255	1,281	1,160	1,057	981	739	816
KSI	28,888	20,322	19,066	19,217	18,911	17,880	16,790	15,454	16,245
All severities	220,363	190,318	183,577	174,663	168,786	160,959	155,760	147,323	145,530
<b>Non built-up roads<sup>2</sup></b>									
							0.6%	0.5%	0.6%
<b>A roads</b>									
Killed	1,357	1,220	1,217	1,196	1,061	916	793	681	689
KSI	10,999	8,029	7,561	7,211	6,572	6,016	5,777	5,109	5,048
All severities	54,882	48,567	46,526	44,272	41,621	36,676	36,047	33,033	31,582
<b>B roads</b>									
Killed	264	265	259	234	262	202	162	158	155
KSI	2,794	2,109	1,889	1,858	1,725	1,675	1,489	1,326	1,360
All severities	12,846	11,424	10,853	10,283	9,942	8,809	7,899	7,407	7,022
<b>Other roads</b>									
Killed	280	271	266	274	280	205	154	154	135
KSI	3,456	2,590	2,372	2,394	2,259	1,974	1,866	1,705	1,524
All severities	18,937	16,223	16,279	15,798	14,614	12,990	11,784	10,516	10,074
<b>All non built-up roads<sup>4</sup></b>									
Killed	1,901	1,756	1,742	1,704	1,603	1,323	1,109	993	979
KSI	17,250	12,728	11,822	11,463	10,556	9,665	9,132	8,140	7,932
All severities	86,666	76,214	73,658	70,353	66,177	58,475	55,730	50,956	48,678
<b>All speed limits<sup>5</sup></b>									
<b>Motorways</b>									
Killed	173	164	204	187	183	158	132	118	106
KSI	1,516	1,301	1,267	1,165	1,253	1,027	990	916	846
All severities	12,891	14,308	13,782	13,388	12,817	11,471	10,656	10,369	9,742
<b>A roads</b>									
Killed	2,106	1,824	1,797	1,815	1,611	1,408	1,267	1,050	1,109
KSI	23,535	16,600	15,447	15,196	14,530	13,506	12,832	11,615	12,027
All severities	152,584	131,175	124,291	117,596	113,372	106,440	103,193	97,482	96,223
<b>B roads</b>									
Killed	476	465	442	416	454	359	330	265	271
KSI	6,563	4,898	4,369	4,385	4,244	4,078	3,789	3,366	3,599
All severities	40,526	36,167	34,526	32,998	32,008	29,953	28,446	26,721	26,200
<b>Other roads</b>									
Killed	823	768	758	754	698	613	493	417	415
KSI	16,042	11,552	11,072	11,099	10,693	9,961	9,301	8,613	8,551
All severities	113,927	99,190	98,418	94,422	89,583	83,041	79,851	74,076	71,785
<b>Total<sup>5</sup></b>									
Killed	3,578	3,221	3,201	3,172	2,946	2,538	2,222	1,850	1,901
KSI	47,656	34,351	32,155	31,845	30,720	28,572	26,912	24,510	25,023
All severities	319,928	280,840	271,017	258,404	247,780	230,905	222,146	208,648	203,950

1 Figures have been rounded to the nearest whole number.

2 Excludes motorways.

3 Killed or seriously injured.

4 Includes cases where road class was not reported

5 Includes cases where speed limit was not reported

### **C. Reported road casualties by road user type and severity**

Most road casualties are sustained as a result of accidents in cars. Car drivers and passengers accounted for 61% of road casualties and 46% of road accident fatalities during 2011 (Table 3). Pedestrian deaths accounted for 24% of all road fatalities in 2011 while 19% of those killed on the roads were riders or passengers of motorcycles.

Over time, the number of pedestrian deaths has fallen, from 1,008 in 1994-98 to 453 in 2011; however, there was an increase between 2010 and 2011 (12%). The number of deaths of motorcycle riders rose between 1994-98 and 2003, from 434 to 665 but has since declined. In 2011, 351 motorcycle riders died as a result of a road accident. The number of deaths among car drivers was relatively constant at around 1,100 deaths per year between 1994-98 and 2006. Car driver deaths then fell below 1,000 in 2007 and fell again in subsequent years to 574 in 2010; in 2011 the number of deaths increased to 613. The number of fatalities among car passengers is also lower now; falling by 57% from 634 deaths on average in 1994-98 to 270 deaths in 2011.



**Table 3: Road casualties by road user type and severity: 1994 - 98 average, 2004 - 2011**

<i>Great Britain</i>		<i>Number of casualties</i>								
	<b>1994-98 average<sup>1</sup></b>	<b>2004</b>	<b>2005</b>	<b>2006</b>	<b>2007</b>	<b>2008</b>	<b>2009</b>	<b>2010</b>	<b>2011</b>	
<b>Pedestrians:</b>										
Killed	1,008	671	671	675	646	572	500	405	453	
KSI <sup>2</sup>	11,669	7,478	7,129	7,051	6,924	6,642	6,045	5,605	5,907	
All severities	46,543	34,881	33,281	30,982	30,191	28,482	26,887	25,845	26,198	
<b>Pedal cyclists:</b>										
Killed	186	134	148	146	136	115	104	111	107	
KSI	3,732	2,308	2,360	2,442	2,564	2,565	2,710	2,771	3,192	
All severities	24,385	16,648	16,561	16,196	16,195	16,297	17,064	17,185	19,215	
<b>Motorcycle</b>										
<b>Riders:</b>										
Killed	434	557	549	576	561	473	454	386	351	
KSI	5,988	6,255	6,142	6,151	6,376	5,767	5,554	4,942	5,389	
All severities	22,251	24,201	23,484	22,143	22,279	20,528	19,773	17,912	19,383	
<b>Passengers:</b>										
Killed	33	28	20	23	27	20	18	17	11	
KSI	487	393	366	333	361	282	268	241	220	
All severities	1,772	1,440	1,340	1,183	1,180	1,022	930	774	767	
<b>Car</b>										
<b>Drivers:</b>										
Killed	1,128	1,106	1,109	1,066	942	861	700	574	613	
KSI	14,634	10,402	9,497	9,305	8,479	7,967	7,370	6,506	6,207	
All severities	127,958	122,045	119,567	115,003	109,100	100,952	96,307	89,787	84,340	
<b>Passengers:</b>										
Killed	634	565	566	546	490	396	359	261	270	
KSI	8,619	5,742	5,120	4,949	4,488	4,001	3,742	3,243	3,018	
All severities	75,329	61,813	58,735	55,997	52,333	48,236	47,105	43,418	40,584	
<b>Bus or coach</b>										
<b>Drivers:</b>										
Killed	1	3	0	2	0	0	1	2	0	
KSI	71	45	31	40	37	40	27	37	15	
All severities	804	822	818	724	638	654	582	550	489	
<b>Passengers:<sup>3</sup></b>										
Killed	19	17	9	17	12	6	13	7	7	
KSI	645	443	332	386	418	392	343	364	317	
All severities	8,794	7,998	7,102	6,529	6,441	6,275	5,735	5,718	5,688	
<b>Light goods vehicle</b>										
<b>Drivers:</b>										
Killed	48	47	46	39	47	36	31	30	28	
KSI	735	486	425	429	371	348	319	265	258	
All severities	5,378	4,641	4,545	4,511	4,054	3,761	3,652	3,440	3,476	
<b>Passengers:</b>										
Killed	17	15	8	13	11	7	5	4	6	
KSI	279	145	162	135	123	97	98	94	82	
All severities	2,046	1,525	1,503	1,403	1,286	1,152	1,091	1,054	1,023	

**Table 3 ctd: Road casualties by road user type and severity: 1994 - 98 average, 2004 - 2011**

<i>Great Britain</i>	<b>1994-98 average<sup>1</sup></b>	<b>2004</b>	<b>2005</b>	<b>2006</b>	<b>2007</b>	<b>2008</b>	<b>2009</b>	<b>2010</b>	<b>2011</b>
<b>Heavy goods vehicle</b>									
<b>Drivers:</b>									
Killed	46	41	48	36	42	20	12	26	26
KSI	497	357	347	330	315	220	165	189	172
All severities	2,855	2,451	2,441	2,132	2,098	1,633	1,291	1,356	1,191
<b>Passengers:</b>									
Killed	7	6	7	3	10	3	2	2	2
KSI	82	49	48	53	48	20	24	23	23
All severities	483	432	402	398	378	297	228	222	224
<b>All road users:<sup>4</sup></b>									
Killed	3,578	3,221	3,201	3,172	2,946	2,538	2,222	1,850	1,901
KSI	47,656	34,351	32,155	31,845	30,720	28,572	26,912	24,510	25,023
All severities	319,928	280,840	271,017	258,404	247,780	230,905	222,146	208,648	203,950

1 Figures have been rounded to the nearest whole number.

2 Killed or Seriously injured.

3 Includes boarding and alighting.

4 Includes other road users and cases where road user type was not reported.

Source: Department for Transport. Reported Road Casualties Great Britain: 2011

## D. Reported road casualties by time of accident and severity

Most road casualties tend to occur when the roads are busiest. In 2011, 72% of road casualties and 61% of road deaths occurred between the hours of 4am and 6pm. However, the risk of an accident being fatal is higher after 6pm. Although one in every 127 casualties between 4am and 6pm was fatal in 2011, the risk of fatality increased to 1 in 103 between 6pm and 10pm and 1 in 50 between 10pm and 4am.

**Table 4: Road Casualties by time of accident and severity: 2001 - 2011**

<i>Great Britain</i>		<i>Number of casualties</i>									
	2001	2002	2003	2004	2005	2006	2007	2008	2009	2010	2011
<b>04.00 to 17.59:</b>											
Killed	1,989	1,952	2,033	1,818	1,804	1,808	1,717	1,479	1,318	1,160	1,160
KSI <sup>1</sup>	25,500	24,550	23,312	21,393	20,061	19,981	19,543	18,364	17,678	16,626	17,075
All severities	218,605	209,194	202,199	195,201	188,210	179,328	173,763	162,879	157,027	150,068	147,017
<b>18.00 to 21.59:</b>											
Killed	757	774	728	676	704	666	656	501	432	342	375
KSI	8,860	8,517	7,962	7,363	6,917	6,769	6,694	6,030	5,442	4,810	4,860
All severities	62,164	60,372	56,921	55,433	53,678	50,891	48,702	44,946	42,991	39,137	38,487
<b>22.00 to 03.59:</b>											
Killed	703	705	747	727	693	698	573	558	472	348	366
KSI	6,193	6,337	5,937	5,593	5,173	5,094	4,480	4,174	3,787	3,074	3,084
All severities	32,450	33,011	31,461	30,191	29,099	28,162	25,291	23,062	22,107	19,434	18,433
<b>Total:<sup>2</sup></b>											
Killed	3,450	3,431	3,508	3,221	3,201	3,172	2,946	2,538	2,222	1,850	1,901
KSI	40,560	39,407	37,215	34,351	32,155	31,845	30,720	28,572	26,912	24,510	25,023
All severities	313,309	302,605	290,607	280,840	271,017	258,404	247,780	230,905	222,146	208,648	203,950

1 Killed or Seriously injured.

2 Includes time not reported.

Source: Department for Transport. Reported Road Casualties Great Britain: 2011

## E. Reported road casualties by age and road user type

Of the 6,207 car drivers killed or seriously injured in 2011: 9% were aged 17 to 19; 27% were aged 20 to 29; 43% were aged 30 to 59; 9% were aged 60 to 69; and, 12% were over 70. Although the legal minimum age for car drivers is seventeen, 9 young people aged under 17 were killed or seriously injured 'behind the wheel' during 2011 (Table 5).

A total of 9,225 people were killed or seriously injured in cars in 2011, one-third of whom were car passengers (33%). 14% of car passengers killed or seriously injured in 2011 were aged under 17, 16% were aged 17 to 19, and 24% were aged 20 to 29.

In 2011, 5,907 pedestrians were killed or seriously injured. Of particular concern was the number of young pedestrians killed or seriously injured: 27% were aged under 16; 9% were aged up to 7; and, 19% were aged between 8 and 15.

The number of pedal cyclists killed or seriously injured has increased in every year since 2004. In 2011, 3,192 pedal cyclists were killed or seriously injured in 2011 of which 12% were aged under 16. Among the 511 moped riders (motor cycle riders 50cc and under) killed or seriously injured in 2011, 46% were aged 17 or under.

**Table 5: Road casualties killed or seriously injured by road user type and age<sup>1</sup>  
1994 - 98 average,<sup>1</sup> 2003 - 2011**

Great Britain

Number of casualties

		1994-98 average	2003	2004	2005	2006	2007	2008	2009	2010	2011
<b>Pedestrians:</b>	0 to 4 <sup>2</sup>	571	271	250	247	239	253	216	214	221	229
	5 to 7	831	392	362	328	308	275	285	253	268	279
	8 to 11	1,350	753	664	637	557	554	518	475	502	497
	12 to 15	1,415	965	1,063	922	921	817	765	718	655	597
	16 to 19	813	666	603	651	612	604	577	502	439	457
	20 to 24	767	642	569	577	556	557	556	506	445	495
	25 to 59	3,136	2,505	2,354	2,191	2,287	2,236	2,142	1,926	1,815	1,945
	60 to 64	370	250	207	201	226	212	221	259	194	237
	65 to 69	379	229	196	201	206	218	210	187	160	199
	70 to 74	490	278	266	244	220	245	238	221	198	236
	75 to 79	517	312	273	290	259	271	266	222	212	246
	80 and over	856	540	537	492	528	557	514	472	411	412
All age groups <sup>3</sup>	11,669	7,933	7,478	7,129	7,051	6,924	6,642	6,045	5,605	5,907	
<b>Pedal cyclists:</b>	0 to 4 <sup>2</sup>	19	13	7	10	6	6	5	4	4	9
	5 to 7	146	53	53	53	48	40	29	45	36	30
	8 to 11	377	216	152	163	159	164	132	129	128	120
	12 to 15	587	313	365	301	290	312	251	280	230	239
	16 to 19	362	180	169	174	187	182	198	167	177	185
	20 to 24	338	185	168	182	182	167	193	205	196	273
	25 to 59	1,545	1,176	1,139	1,207	1,290	1,432	1,492	1,593	1,688	1,998
	60 and over	313	235	221	224	239	213	218	260	272	294
	All age groups <sup>3</sup>	3,732	2,411	2,308	2,360	2,442	2,564	2,565	2,710	2,771	3,192
	<b>Motor cycle riders 50cc and under:</b>	Under 16	14	23	26	40	30	18	12	15	9
16		109	262	313	322	285	282	222	218	192	165
17		46	118	119	114	139	144	108	99	76	61
18		17	43	43	45	37	48	39	34	24	38
19		10	26	26	27	28	30	22	19	11	26
20 to 24		46	58	55	53	53	65	58	37	42	64
25 to 59		174	187	153	145	156	173	135	124	113	120
60 and over		57	32	19	13	11	19	21	26	10	20
All age groups <sup>3</sup>		477	762	766	763	748	792	626	576	481	511
<b>Motor cycle riders over 50cc:<sup>4</sup></b>		Under 16	41	56	46	44	32	27	25	14	18
	16	81	81	84	74	52	57	42	37	38	27
	17	224	276	242	264	216	230	222	189	157	204
	18	183	222	199	175	195	173	200	181	173	188
	19	161	187	174	176	180	186	163	138	141	190
	20 to 24	918	756	695	701	678	751	653	624	545	643
	25 to 59	3,697	4,585	3,815	3,721	3,770	3,835	3,547	3,459	3,063	3,283
	60 and over	127	182	166	147	200	237	214	264	287	304
	All age groups <sup>3</sup>	5,511	6,443	5,489	5,379	5,403	5,584	5,141	4,978	4,461	4,878

**Table 5 ctd: Road casualties killed or seriously injured by road user type and age<sup>1</sup>  
1994 - 98 average,<sup>2</sup> 2003 - 2011**

Great Britain

		1994-98									
		average	2003	2004	2005	2006	2007	2008	2009	2010	2011
<b>Car drivers:</b>	Under 17	61	55	59	45	39	32	33	14	14	9
	17	365	259	223	256	261	244	217	175	144	115
	18	627	483	433	454	462	420	372	343	252	227
	19	554	450	462	435	428	390	364	326	275	209
	20 to 24	2,421	1,800	1,718	1,592	1,546	1,426	1,315	1,182	999	1,001
	25 to 29	2,062	1,334	1,196	1,065	1,057	960	920	805	694	670
	30 to 39	2,993	2,179	2,035	1,772	1,658	1,463	1,323	1,251	1,084	919
	40 to 59	3,438	2,741	2,652	2,365	2,352	2,178	2,001	1,912	1,717	1,735
	60 to 69	912	704	662	621	655	565	607	563	556	539
	70 to 79	706	585	509	480	477	432	438	450	386	422
	80 and over	325	303	310	298	281	253	293	279	320	316
	All age groups <sup>3</sup>	14,634	11,040	10,402	9,497	9,305	8,479	7,967	7,370	6,506	6,207
<b>Car passengers:</b>	Under 17	1,633	1,117	991	802	831	714	651	607	478	418
	17	511	404	347	380	339	326	302	258	171	164
	18	498	394	376	322	372	327	290	257	200	155
	19	382	328	334	263	281	216	237	209	153	149
	20 to 24	1,288	1,018	999	877	801	793	626	599	515	482
	25 to 29	788	455	419	403	420	349	342	302	262	247
	30 to 39	913	637	572	478	461	400	342	338	318	279
	40 to 59	1,145	768	703	660	618	585	524	486	452	441
	60 to 69	556	337	313	285	266	258	230	245	219	223
	70 to 79	482	345	299	288	277	227	230	212	233	217
	80 and over	252	229	211	201	180	191	155	166	178	192
	All age groups <sup>3</sup>	8,619	6,251	5,742	5,120	4,949	4,488	4,001	3,742	3,243	3,018

1 Figures have been rounded to the nearest whole number.

2 In some cases age 0 may have been coded where the age of the casualty was not reported.

3 Includes cases where age was not reported.

4 Includes electric motorcycles and cases where engine size was not reported.

Source: Department for Transport. Reported Road Casualties Great Britain: 2011

## F. Breath testing among drivers involved in accidents

In 2011, 204,720 car drivers were involved in accidents of which 112,448 were required to undertake breath testing, either at the roadside or at a police station (Table 6). The proportion of car drivers involved in accidents who were breath tested increased from 51% in 2001 to 55% in 2011; although the actual number tested has decreased. The vast majority of car drivers pass the breath test - in 2011 3% failed, representing 2% of all car drivers involved in accidents. Hence, the likelihood of a car accident involving a driver under the influence of alcohol is around one-in-fifty.

In 2011, the proportion of motorcycle riders breath tested following an accident was slightly lower than that for car drivers (51%). Again, the majority of those tested subsequently passed the test.

**Table 6: Breath tests and breath test failures by drivers and riders involved in accidents: 2001 - 2011**

<i>Great Britain</i>		<i>number and percentages</i>									
	2001	2002	2003	2004	2005	2006	2007	2008	2009	2010	2011
<b>Car drivers involved:</b>	321,900	314,568	299,933	291,842	281,810	267,991	255,891	236,923	227,244	212,685	204,720
<b>Breath tested:</b>											
Number	163,540	159,782	151,442	149,430	149,687	146,564	146,024	132,708	124,779	115,674	112,448
Percentage of drivers involved	51	51	50	51	53	55	57	56	55	54	55
<b>Failed breath test:<sup>1</sup></b>											
Number	7,264	7,285	7,289	6,655	6,397	5,873	5,644	4,899	4,594	3,868	3,858
Percentage of drivers tested	4.4	4.6	4.8	4.5	4.3	4.0	3.9	3.7	3.7	3.3	3.4
Percentage of drivers involved	2.3	2.3	2.4	2.3	2.3	2.2	2.2	2.1	2.0	1.8	1.9
<b>Motorcycle riders involved:</b>	30,084	29,503	29,523	26,857	25,870	24,323	24,381	22,427	21,590	19,534	21,059
<b>Breath tested:</b>											
Number	13,725	12,992	13,178	12,422	12,221	11,884	12,648	11,569	10,862	9,765	10,785
Percentage of riders involved	46	44	45	46	47	49	52	52	50	50	51
<b>Failed breath test:<sup>1</sup></b>											
Number	446	441	510	423	391	374	337	314	282	222	251
Percentage of riders tested	3.2	3.4	3.9	3.4	3.2	3.1	2.7	2.7	2.6	2.3	2.3
Percentage of riders involved	1.5	1.5	1.7	1.6	1.5	1.5	1.4	1.4	1.3	1.1	1.2
<b>Other drivers involved:<sup>2</sup></b>	48,168	46,408	44,822	43,844	41,277	38,958	37,894	35,258	32,100	31,198	30,322
<b>Breath tested:</b>											
Number	24,482	23,479	22,672	22,147	21,331	20,842	20,900	18,717	16,292	15,825	15,417
Percentage of drivers involved	51	51	51	51	51.7	53	55	53	51	51	51
<b>Failed breath test:<sup>1</sup></b>											
Number	387	378	352	352	328	348	298	308	253	198	257
Percentage of drivers tested	1.6	1.6	1.6	1.6	1.5	1.7	1.4	1.6	1.6	1.3	1.7
Percentage of drivers involved	0.8	0.8	0.8	0.8	0.8	0.9	0.8	0.9	0.8	0.6	0.8
<b>Total involved:</b>	400,152	390,479	374,278	362,543	348,957	331,272	318,166	294,608	280,934	263,417	256,101
<b>Breath tested:</b>											
Number	201,747	196,253	187,292	183,999	183,239	179,290	179,572	162,994	151,933	141,264	138,650
Percentage of drivers involved	50	50	50	51	53	54	56	55	54	54	54
<b>Failed breath test:<sup>1</sup></b>											
Number	8,097	8,104	8,151	7,430	7,116	6,595	6,279	5,521	5,129	4,288	4,366
Percentage of drivers tested	4.0	4.1	4.4	4.0	3.9	3.7	3.5	3.4	3.4	3.0	3.1
Percentage of drivers involved	2.0	2.1	2.2	2.0	2.0	2.0	2.0	1.9	1.8	1.6	1.7

1 Failed or refused to provide a specimen of breath.

2 May include a very small number of non-motor vehicle drivers/riders

Source: Department for Transport. Reported Road Casualties Great Britain: 2011

## G. International comparisons of road deaths

Table 7 details international comparisons of road deaths in a selection of European countries and other countries from elsewhere in the world.

England had a lower road death rate in 2011 than other constituent countries of the UK (30 deaths per million population); the death rate was highest in Wales (40 per million) with Scotland (35 per million) and Northern Ireland (33 per million) recording lower rates.

The United Kingdom compares extremely favourably with other countries in terms of the number of road deaths per million of population; in 2011, the UK had a lower death rate than all EU member states. The death rate in the United States was around 3 times higher than that in the UK.

**Table 7. International comparisons of road deaths:<sup>1</sup> number and rates, by selected countries, 2010 and 2011 (provisional)<sup>2</sup>**

	2010		2011	
	Number of road deaths	Road deaths per million population	Number of road deaths	Road deaths per million population
England	1,553	30	1,594	30
Wales	89	30	121	40
Scotland	208	40	186	35
Great Britain	1,850	31	1,901	31
Northern Ireland	55	31	59	33
United Kingdom	1,905	31	1,960	31
Austria	552	66	523	62
Belgium	840	77	875	80
Bulgaria	775	102	658	88
Cyprus	60	75	71	88
Czech Republic	802	76	773	73
Denmark	255	46	220	40
Estonia	78	58	101	75
Finland	272	51	292	54
France	3,992	62	3,970	61
Germany	3,648	45	4,002	49
Greece	1,258	111	1,087	96
Hungary	740	74	638	64
Irish Republic	212	47	186	42
Italy	4,090	68	3,800	63
Latvia	218	97	179	80
Lithuania	299	90	297	92
Luxembourg	32	64	33	64
Malta	13	31	17	41
Netherlands	640	39	661	40
Poland	3,908	102	4,189	110
Portugal	937	88	785	74
Romania	2,377	111	2,018	94
Slovakia	353	65	324	60
Slovenia	138	67	141	69
Spain	2,478	54	2,056	45
Sweden	266	28	314	33
Croatia	426	96	416	94
Israel	352	47	341	44
Iceland	8	25	12	38
Norway	208	43	168	34
Switzerland	327	42	320	41
Australia	1,352	61	1,292	57
Canada	..	..	..	..
Japan	5,745	45	5,449	43
New Zealand	375	87	284	66
Republic of Korea	5,505	113	..	..
USA	32,885	107	32,310	105

Notes:

<sup>1</sup> In accordance with the commonly agreed international definition, most countries define a fatality as one being due to a road accident where death occurs within 30 days of the accident. The official road accident statistics of some countries however, limit the fatalities to those occurring within shorter periods after the accident. Numbers of deaths and death rates in the above table have been adjusted according to the factors used by the Economic Commission for Europe and the International Transport Forum (ITF) (formerly known as ECMT) to represent standardised 30-day deaths: Italy (7 days) +8%; France (6 days) +5.7%; Portugal (1 day) +14%; Republic of Korea (3 days) +15%.

<sup>2</sup> Data taken from International Road Traffic and Accident Database (OECD), ETSC, EUROSTAT and CARE (EU road accident database).

Source: Department for Transport. *Reported Road Casualties Great Britain: 2011*

## H. Further Information

Further information relating to roads and road accidents may be found in a number of sources, including a variety of House of Commons Library Research Papers and Standard Notes.

Library Research Papers and Standard Notes relating to roads may be found on the Library's [Roads](#) subject page on the parliamentary website.<sup>4</sup>

The Department for Transport provides a range of statistical material relating to road accidents. This is available on the [DfT section of the Gov.uk website](#).<sup>5</sup>

The Royal Society for the Prevention of Accidents (RoSPA) Road Safety Department raises awareness about the causes of road accidents and promotes measures to help prevent them or reduce their severity. The Department provides information, education, training and publicity resources and services for road users and road safety professionals. Further information may be found at: <http://www.rospa.com/>

---

<sup>4</sup> <http://www.parliament.uk/topics/Roads.htm>

<sup>5</sup> <https://www.gov.uk/government/organisations/department-for-transport/series/road-accidents-and-safety-statistics>